



# **12' Tree Deck**

## **Installation Instructions**

**NOTES:** Please check for any damage caused by the shipping company and take appropriate steps to file a claim, if needed.

\*Decking will be shipped as whole lengths and trimmed on site to accommodate any trees in design.

\*Minimum 2" required clearance of decking around circumference of tree to accommodate growth.

\*Please call **Digsafe** and check for any underground utilities before digging anywhere.

### **Materials needed**

Cordless drill/driver, T25 bit, T30 bit, auger and/or post hole shovel, spade shovel, transfer (flat) shovel, grade rake, garden rake, level, tape measure, plate compactor, hand tamp, 6' ladder, four 12" sonotubes, four (4) Simpson hurricane ties, four (4) Simpson strong tie retrofit post base or similar, and forty (40) 50lb bags of fast-setting premixed concrete (not included). Concrete amount required may vary depending on how deep you can get the holes. Concrete amounts can be easily calculated at <http://www.quikrete.com/Calculator/Main.asp>.

### **Instructions**

1. Remove items from pallet or packaging. You should find four (4) 6x6 posts, one (1) sub frame assembly (or 6 doubled up 2x12's if subframe isn't assembled), two (2) deck frame halves, two (2) loose deck frame perimeter joists, eight (8) 2ft long deck frame center blocking members, twelve (12) loose deck boards, eight (8) deck railing posts, eight (8) deck railing assemblies, one (1) climbing wall assembly, one (1) closed back ladder, one (1) climbing net assembly, one (1) slide, one (1) slide mounting board, and all required hardware.

*\*Note: Keep in mind that this is a climbing element and therefore it needs a fall zone extending 6 feet out on all sides of it which is usually 12" deep. You can create a container for this material by using either 2 layers of 6x6 retainers made for this purpose (which we can provide), or by digging a hole 12" deep. If you choose to dig the 12" deep hole, keep in mind that it needs to be drained so it doesn't fill up with rainwater or snow melt.*

2. Mark out the fall zone referencing the note above (so your fall zone will be a 24' diameter circle). Either excavate the fall zone, or build it up depending on what you choose to do.

3. After the fall zone area is prepped, compact the area using a plate compactor.

4. Now we'll assemble the subframe if not already assembled. Locate the six (6) doubled up 2x12's. Lay the pieces out matching up the labeled ends, and fasten together as shown in Image 1, page 2.

*\*Note: It is recommended to assemble the subframe and main frame on flat ground (such as a parking lot), then be carried to desired installation location.*

*If a tree is going through the tree deck, leave one perimeter board off the subframe to get the subframe around the tree. The main frame would then be assembled on top of the subframe to encompass the tree.*

5. Move subframe to desired location, place down so the center of the subframe is in the center of your fall zone, and orientate how you'd like.

# 12' Tree Deck

## Installation Instructions

6. Mark the location of the four post holes to dig for the concrete footings, referencing Image 2 below.

7. Move the subframe away from marked

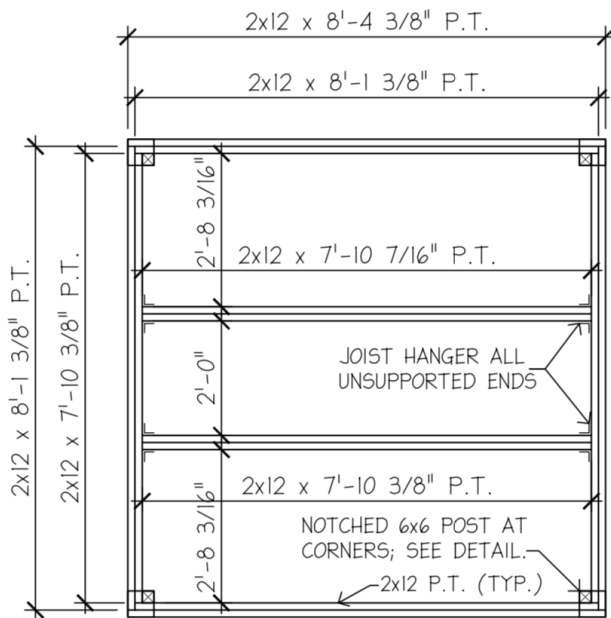


Image 1: Subframe

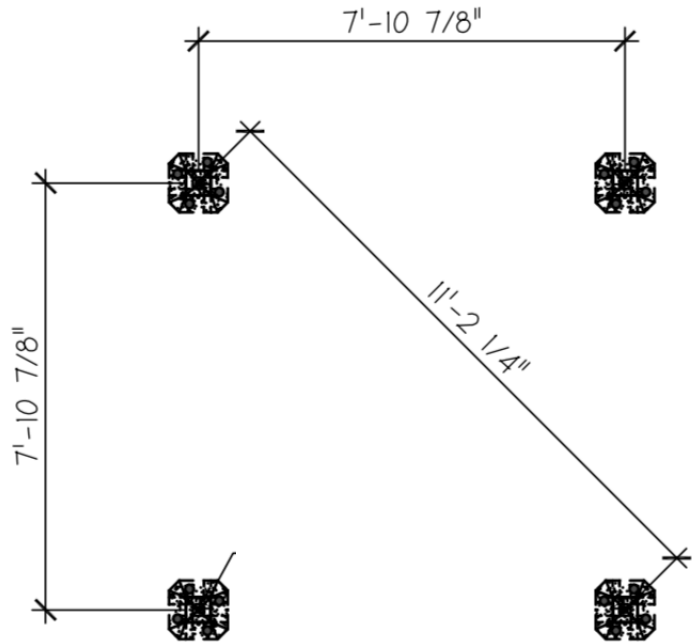


Image 2: Footing Layout

locations to give you room to dig post holes, using an auger or a post hole shovel/digger.

8. Set the four post hole diameters to 1'-0," and hole depths to approximately 4'-0" (depending on region). The bottom of hole should "flare" out a little to create a bell shape to prevent frost heaving the post where applicable. Check local codes for the frost line in your area.
9. Place the subframe over the holes you dug to make sure they are aligned right, and make any adjustment needed to the hole.
10. Using the hand tamp, compact any loose material at the bottom of the holes.
11. Fill the bottom 6" of holes with drainage stone. Insert sonotubes into holes and fill with fast setting concrete mix adding water per instructions on bag. Using a laser level, make sure all footings are at the same height. Let concrete cure for 24 hours.
12. Attach the four posts to the subframe, and place subframe/post assembly onto footings.
13. Using a bubble level, check the level of the subframe horizontally by placing the level across the frame from front to back, and left to right, in three different evenly spaced spots. Make any adjustments needed.
14. Next, plumb the subframe posts in both directions by placing the level on two adjacent sides of each post. Plumb one post first, then plumb the second, and so on.

# 12' Tree Deck

## Installation Instructions

15. Secure the posts to the footings using Simpson Strong-Tie galvanized retrofit post base, or similar. Attach the strong-ties to the posts, then predrill the holes to secure the strong-tie to the footing using a masonry bit, then attach with red head anchor bolts or similar.
16. Recheck to make sure subframe/post assembly is level and plumb, and make any adjustments.
17. Next we'll assemble the main deck. Locate the two (2) main deck frame halves, two (2) loose deck frame perimeter joists, eight (8) 2ft long deck frame center blocking, and twelve (12) loose deck boards.
18. Lay the two deck halves down and space them two feet apart as shown in Image 3 below.

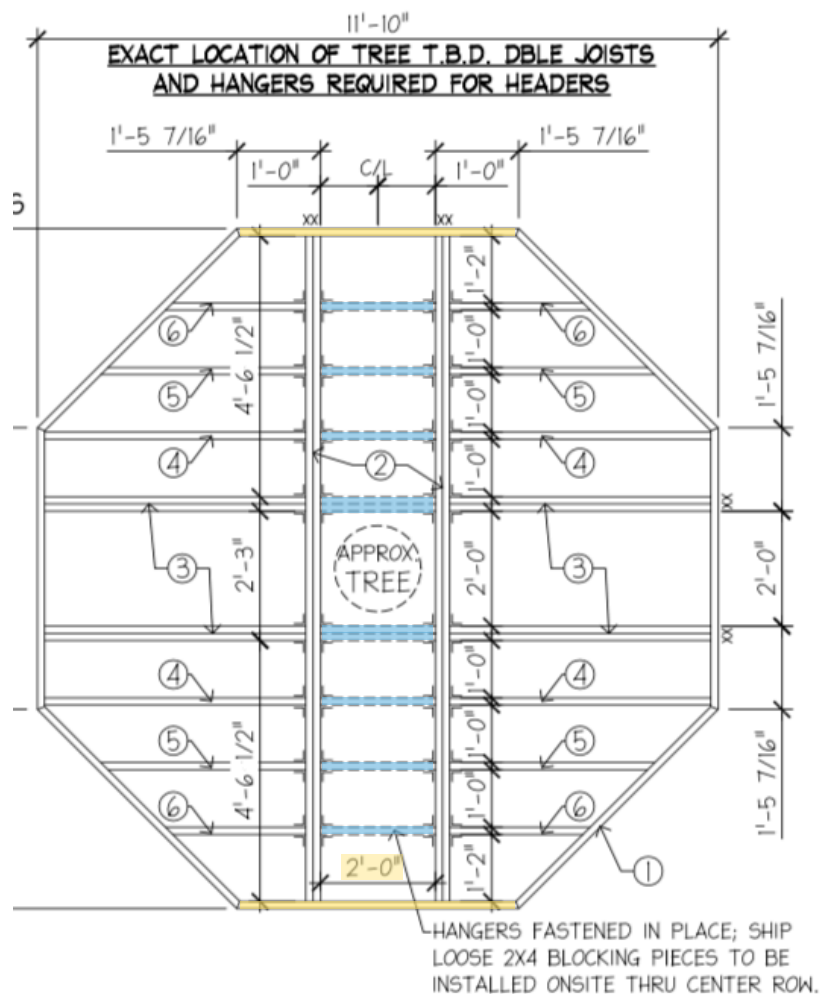


Image 3: Main Deck Frame

19. Install the eight pieces of 2ft long blocking (highlighted in blue) shown above by inserting them in the joist hangers and fastening.
20. Install the two perimeter joists (highlighted in yellow) shown above fastening them to the adjoining perimeter joists on each end, as well as to the two doubled joists that butt into it.

# **12' Tree Deck**

## **Installation Instructions**

21. Lift the main deck, place it onto the subframe aligning the centers, and orientate appropriately.
22. Secure the main deck to the subframe with four Simpson strong tie hurricane ties or similiar.
23. Attach the eight railing sections (4 common rails, 1 climbing net rail, 1 slide rail, 1 closed back rail, and 1 climbing wall rail). These sections may be different depending on what accessories were ordered.
24. Install tree deck accessories (attached).
25. Install fall zone material (we recommend wood chips).
26. All wood is treated with kid-friendly preservative, but as is the case with all wood facing the elements, it needs to be cared for, so check it periodically for rough spots, splinters, etc, and sand them out, and treat it with kid-friendly wood preservative (we have it available if you can't find it) once or twice a year to keep the wood from deteriorating.
27. Enjoy your Tree Deck!

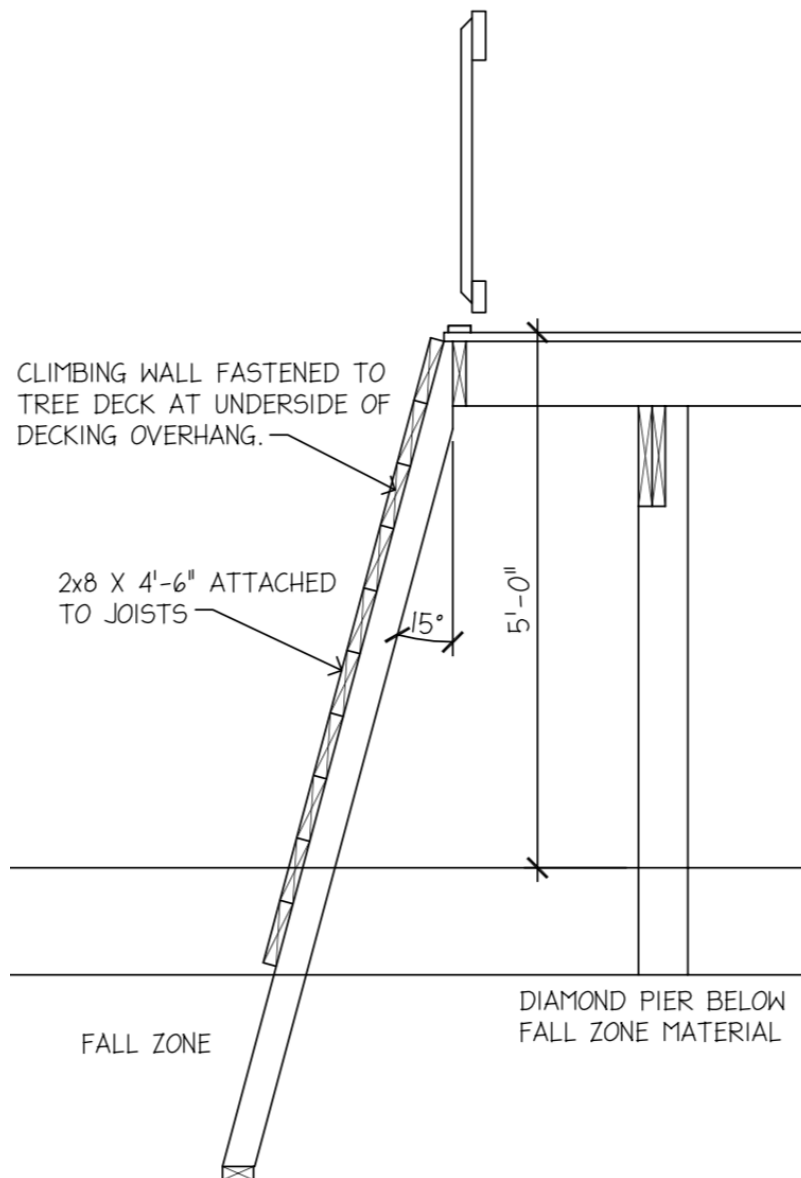
*\*Tree deck accessory instructions are attached.\**

# 12' Tree Deck

## Installation Instructions

### Climbing Wall Accessory

1. Attach the climbing wall, fastening the top to the tree deck at the underside of the decking overhang, as shown below.
2. Secure the bottom of the climbing wall by driving two 2' long pieces of 1/2" rebar through the bottom plate.

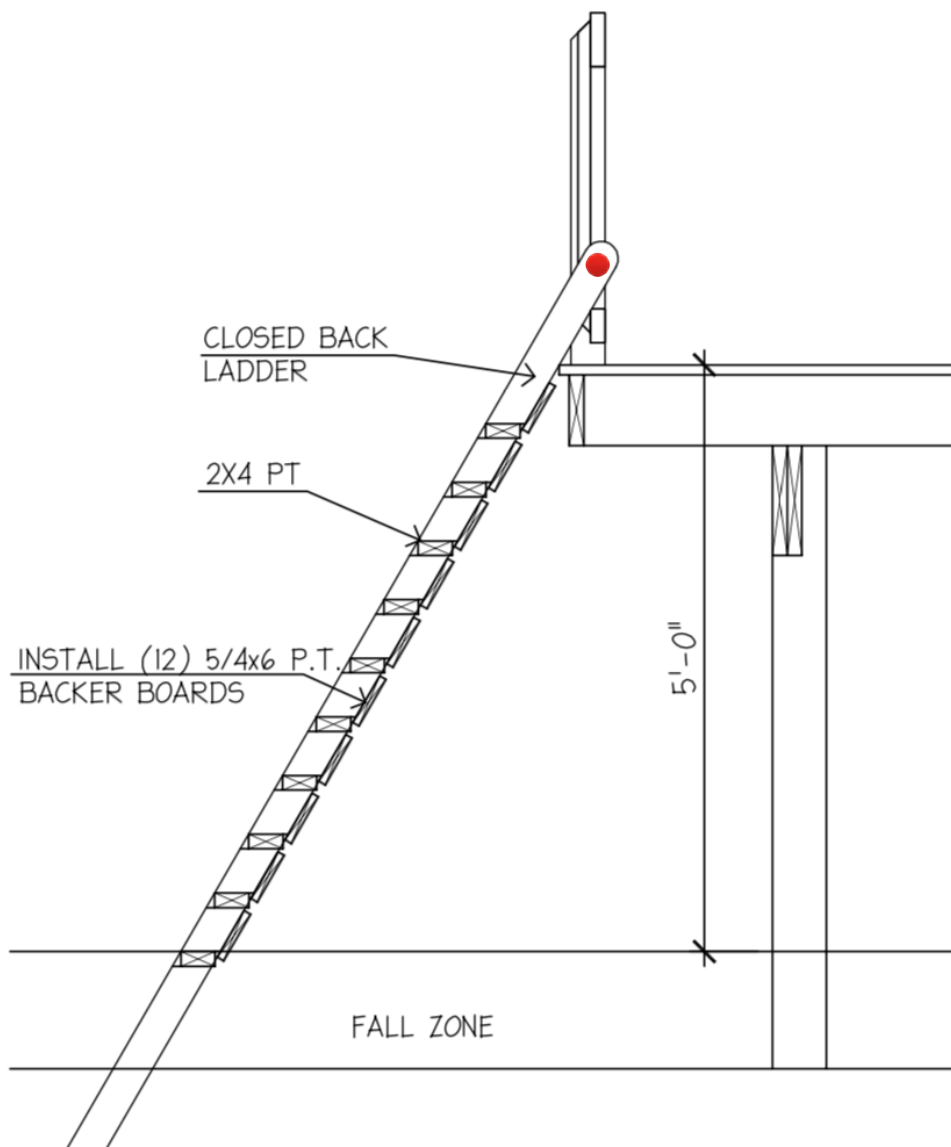


# 12' Tree Deck

## Installation Instructions

### Closed Back Ladder Accessory

1. Attach the closed back ladder, fastening the top to the railing posts, as shown below (red dot indicates fastening location).
2. Secure the bottom of the climbing wall by driving two 2' long pieces of 1/2" rebar through the bottom plate.

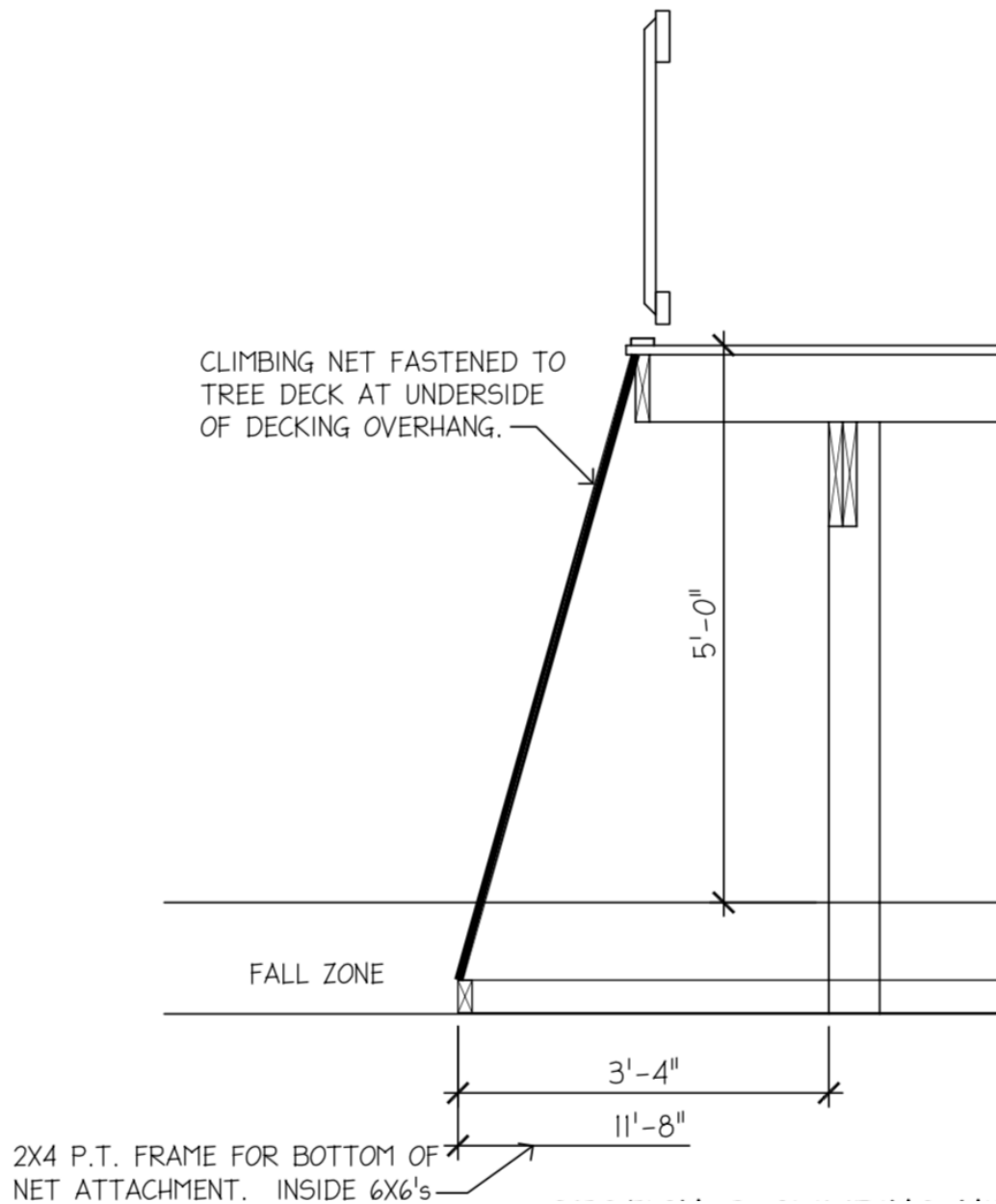


# 12' Tree Deck

## Installation Instructions

### Climbing Net Accessory

1. Attach the climbing net, fastening the top to the deck frame at the underside of the decking overhang, as shown below.
2. Secure the bottom of the climbing net by installing the 2x4 P.T. frame from the climbing net base to the inside of the 6x6 subframe posts, as shown below.



# **12' Tree Deck**

## **Installation Instructions**

### **Slide Accessory**

1. Assemble the slide if not already assembled.
2. Line the slide mounting board up to the slide entrance as shown below, and drill three holes through the slide lip using the mounting plate as your guide.



3. Attach the slide mounting plate to the slide with the three carriage bolts provided.
4. Dry fit the slide in place, and mark the location of the slide foot.
5. Dig the slide foot post hole setting the diameter to 1'-0," and post hole depth to approximately 3'-6" (depending on region) and insert a sonotube into the hole. The bottom of hole should "flare" out a little to create a bell shape to prevent frost heaving the post where applicable.
6. Attach the slide foot to the slide.
7. Lift the slide and set the slide foot into the post hole, and pull the entrance up to the deck so that the slide lip sits on the deck boards, and the slide mounting board is flush with the deck frame.
8. Attach the slide entrance to the main deck by securing the slide mounting board (attached in step 3) to the deck frame with the provided hardware through the three labeled, predrilled holes.
9. Now you'll concrete in your slide foot. Double check the slide angle using an angle finder (you can download free angle finder apps on your phone) to ensure its at the desired slope (33-35 degrees) and make any adjustments to the slide chute.
10. Make sure the slide is level from side to side by placing a level across the side rails near the slide chute so the level is perpendicular to the slide, and make any adjustments necessary.
11. Fill the slide foot sonotube with fast setting concrete mix adding water per instructions on bag. Recheck your slope and the level from side to side.
12. Backfill hole and install fallzone material.